

SHOWER WALLNUT™

Shower Arm Adapter

Patent # 6,378,912

NEW
DESIGN



No More Damaging Leaks Behind the Wall!



- **Eliminate Drop-ear Elbows.**
Stub out with copper tube, as you would other fixtures. No more blind threading. No over-tightening, split thread nightmares. Stub-out-to-shower-arm connection is made outside the finished wall.
- **Reduce Potential Mold Growth.**
Eliminate the untestable connection between the shower arm and drop-ear elbow. Reduce the potential for leaks behind the wall which promote mold growth.
- **Eliminate Steel Nipples & Caps.**
No material waste from lost nipples and caps. No more damaged walls from removing test nipples.



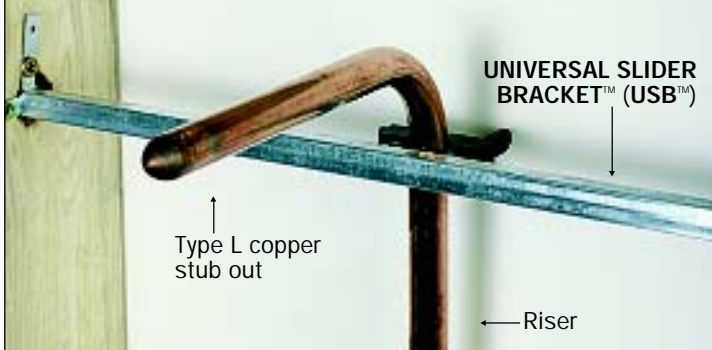
tel: 1-800-821-3944
www.siouxchief.com
fax: 1-800-758-5950

Sioux Chief
MANUFACTURING COMPANY



The **SHOWER WALLNUT™** makes sho

1 Stub into shower enclosure



Stub out with 1/2" type L copper and securely fasten behind wall. We recommend using our **USB™** as it will provide "spring-tension" when the **Shower Walnut** is cinched against the finished wall.

(Install **USB** on finished wall side of riser, and as high on riser as possible.)

2 Cut off the stub out



After pressure test, cut off the stub out with a tubing cutter, leaving 1 1/2" stubbed out.

3 Sand the stub out surface



Clean and roughen the entire surface of the tube back to the finished wall using sandcloth. Be sure to remove any dry wall mud, wallpaper glue, tile grout, paint, etc. from the surface of the tube.

4 Pre-install Shower Walnut



Slip the **Shower Walnut** (hex side out) onto the stub out and push it back against the finished wall.

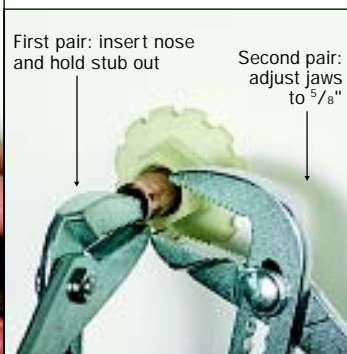
A **Shower Walnut** removal tool is available (#307-616). **Shower Walnuts** are NOT reusable after removal.



5 Prepare to cinch-back



Grip the tube wall through the open end of the stub out with nose of pliers (slight deformation of stub out opening is okay). Place open, forked end of shower arm tool (#307-625) between front of the **Shower Walnut** and nose of pliers.



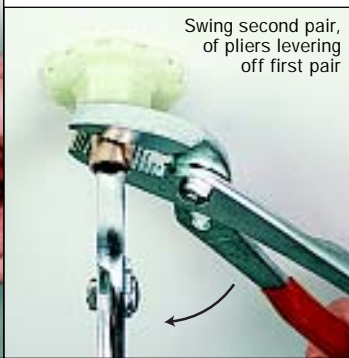
Alternative Method: (Using Two Pairs of Pliers) Grasp and hold the lower wall of the stub out tube. Adjust the second pair so that the jaws stand open about 5/8" apart, and are parallel. Slide the jaws of the second pair over the stub out (do not crush the tube) and perpendicular to it.

Shower arms easier than ever to install!

6 Cinch-back against wall



Pull handle of shower arm tool towards you—levering off the pliers, this will cinch the **Showers Walnut** VERY TIGHTLY back against the finished wall.



This levering motion will spring-load the **Showers Walnut** TIGHTLY against the finished wall.

Alternative Method: (Using Two Pairs of Pliers) Swing the handle of the second pair towards you, levering off the nose of the first pair, and pressing **Showers Walnut** back against the finished wall.

7 Pre-thread shower arm



DO NOT use any thread sealant or Teflon tape on Shower Walnut end of shower arm. Use brass shower arms only. Thread shower arm over the stub out and into FIP threads.



8 Install shower arm



Hold the hex of **Showers Walnut**, and thread shower arm COMPLETELY and TIGHTLY into FIP threads. Don't worry about shower arm orientation at this time. We recommend using our Shower Arm Tool to install arm.

9 Straighten the shower arm



Holding hex shoulder, turn the entire **Showers Walnut** and shower arm assembly until the shower arm points directly downward.

10 Install escutcheon



Slide the escutcheon over the shower arm and snap on to the flange base of the **Showers Walnut**.

Escutcheons Included!
Polished Brass, White Enamel or Chrome

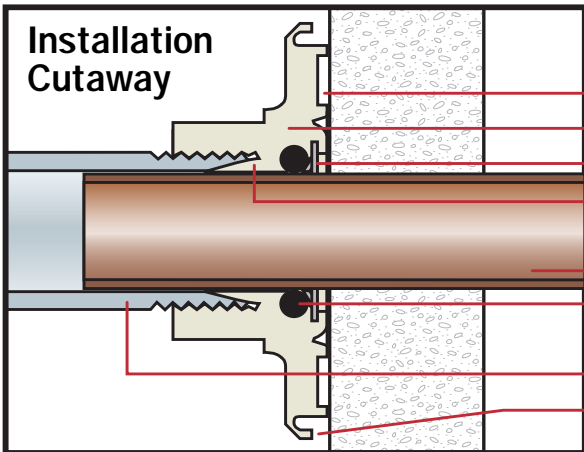


SHOWER WALLNUT™

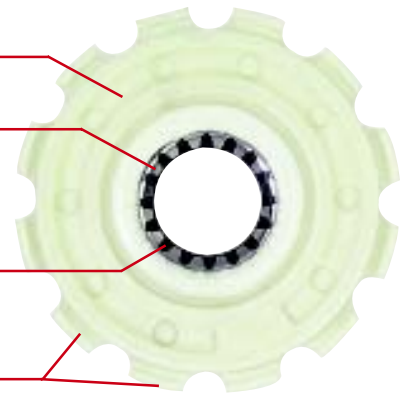
Shower Arm Adapter



- Never install shower arms the hard way again . . . Stub out with copper tube, as you would other fixtures.
- Stub-out-to-shower-arm connection is made outside the finished wall. No hidden leaks in the wall to promote the growth of dangerous molds.
- Using the Shower Wallnut extends the shower head away from the wall—a luxurious plus for the homeowner.



Rear View



- Optional sealant groove
- Shower Wallnut
- Lock ring
- Compression ferrule
Primary sealing component
- 1/2" CTS Stub out
- Buna-N o-ring
Provides back-up seal
- Brass shower arm
- Escutcheon clips

Replacing Wobbly Shower Arms?



Our retro-fit kit is perfect for replacing loose, wobbly shower arms where a drop-ear ell is used.

SPECIFICATIONS

NUT: DuPont Zytel™ 40% glass-filled Nylon 66 - 32,000 PSI tensile strength 1/2" FIP thread x 5/8" O.D. slip fit.

LOCK RING: Stainless steel

O-RING: Buna-N

CYCLE TESTING: over 1,000 cycles from 180 °F to 60 °F at 100 psi.

New Tools Available



Shower Arm Tool
Item No: 307-625
Patented (5" x 6" long)



Shower Wallnut Removal Tool
Item No: 307-616
(7/16" bolt head, 5 1/2" overall)

Item No.	Description	Box Qty.
616-02C	Shower Wallnut with CHROME plated steel escutcheon - Bagged	25
616-02P	Shower Wallnut with POLISHED BRASS plated steel escutcheon - Bagged	25
616-02W	Shower Wallnut with WHITE ENAMEL coated steel escutcheon - Bagged	25
616-02C8L	Shower Wallnut with CHROME plated steel escutcheon and one 1/2" MIP x 1/2" spin closed x 8" long, type L stub out - bagged kit	25
TOOLS & ACCESSORIES		
307-625	Shower Arm Tool: Cast metal tool for shower arm installation	6
307-616	Shower Wallnut Removal Tool: Designed for easy removal of Shower Wallnuts **Note: Shower Wallnuts are not reusable after removal**	1
522-1614	Universal Slider Bracket with 1 Touchdown clamp & 4 wood screws	50
608-L2308	Copper shower riser elbow - Type L, 1/2" MSWT, 30" riser x 8" Stub Out Ell	25
608-L2508	Copper shower riser elbow - Type L, 1/2" MSWT, 50" riser x 8" Stub Out Ell	25

tel: 1-800-821-3944 816-779-6104 • www.siouxchief.com • fax: 1-800-758-5950 816-758-5950

Distributed by

Sioux Chief
MANUFACTURING COMPANY



P.O. Box 397 • 24110 South Peculiar Drive • Peculiar, Missouri 64078 U.S.A.